

ENTRAR

Automatic Bollard Series



Automatic Bollard Series

Automatic bollards, also known as lifting bollards, lifting road bollards, anti-collision road bollards, isolation bollards, etc., are a kind of lifting post used to control vehicle traffic. Automatic bollards are widely used in many occasions such as urban transportation, military and national important agency gates and surrounding areas, pedestrian streets, highway toll stations, airports, schools, banks, large clubs, parking lots, etc. By restricting passing vehicles, it effectively ensures the traffic order and the safety of major facilities and places



Mainly Fuction

- Perimeter security: Protecting buildings, facilities, and critical infrastructure.
- Traffic control: Managing vehicle flow, creating pedestrian zones, and preventing unauthorized access.
- Event management: Controlling access to venues and ensuring public safety.
- Parking lot control: Restricting unauthorized entry and preventing tailgating.
- Anti-theft Function: Install at parking space or in front of warehouse to protect the property.



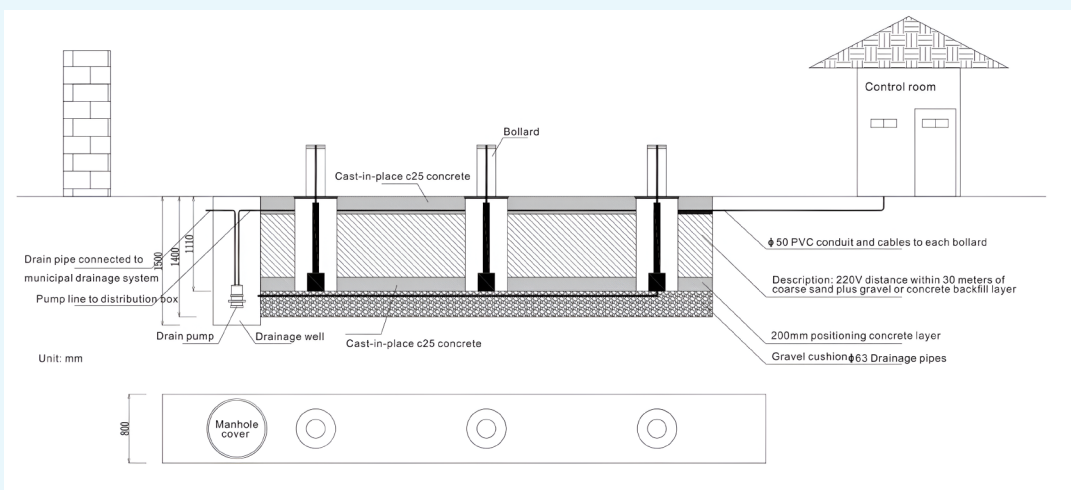
Features

- **Automatic operation:** Controlled remotely or through integrated systems for efficient management.
- **Retractable design:** Ability to be lowered into the ground when not in use, maintaining a clean aesthetic.
- **Durable construction:** Built to withstand impacts from vehicles, ensuring security and longevity.
- **Customization options:** Available in various sizes, materials, and finishes to match specific requirements.

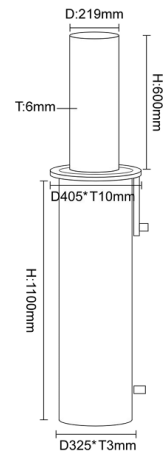
Usage Scenario

Government and Diplomatic Buildings, Pedestrian Zones, Traffic Management Places, Company Building, Parking Lot, Parking Space, Loading Docks, Schools and Universities, Hospitals and Healthcare Facilities, Retail Centers, Commercial and Industrial Sites, Urban Environments etc.

Installation Diagram



Automatic Hydraulic Rising Bollard



EN-LB101-1

Dimensions And Technical Parameter

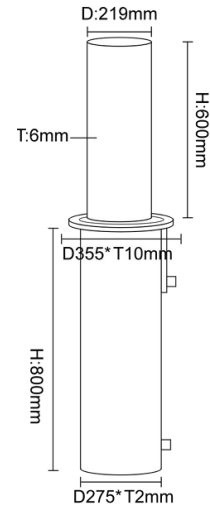
Material	304 stainless steel
Wall Thickness	6mm
Blocking Height	600mm
Blocking Diameter	219mm
Flange Size	D405*10mm
Embedded Sleeve Size	D325*T3mm
Embedded Sleeve Height	1100mm
Weight	100kg
Rising / Fall Time	4S / 3S
Input Voltage	single phase 220V±5%,50HZ, or 110V
Power	370W
Protection Level (waterproof)	IP68
Operation Temperature	- 45oc to 75oc
Control Way	remote control (phone app available)

Other size, SS316/mild steel material, control way are available

Automatic Hydraulic Rising Bollard



EN-LB101-2

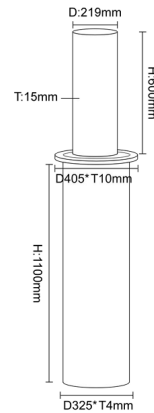


Dimensions And Technical Parameter

Material	304 stainless steel
Wall Thickness	6mm
Blocking Height	600mm
Blocking Diameter	219mm
Flange Size	D355*10mm
Embedded Sleeve Size	D275*T2mm
Embedded Sleeve Height	800mm
Weight	65kg
Rising / Fall Time	4S / 3S
Input Voltage	single phase 220V±5%,50HZ, or 110V
Power	370W
Protection Level (waterproof)	IP68
Operation Temperature	- 45°C to 75°C
Control Way	remote control (phone app available)

Other size, SS316/mild steel material, control way are available

Automatic Hydraulic Rising Bollard-Crash-Rated Type



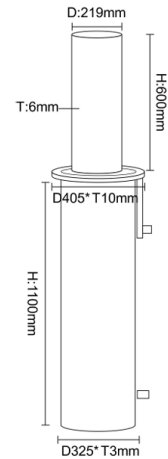
EN-LB101-3

Dimensions And Technical Parameter

Material	304 stainless steel
Wall Thickness	15mm
Blocking Height	600mm
Blocking Diameter	219mm
Flange Size	D405*T10mm
Embedded Sleeve Size	D325*T4mm
Embedded Sleeve Height	1100mm
Weight	around 200kg
Rising / Fall Time	4S / 3S
Input Voltage	single phase 220V±5%, 50HZ
Power	370W
Protection Level (waterproof)	IP68
Operation Temperature	- 45°C to 75°C
Control Way	remote control (phone app available)

K8 Crash Rating, Other size, SS316/mild steel material, control way are available

Automatic Hydraulic Rising Bollard



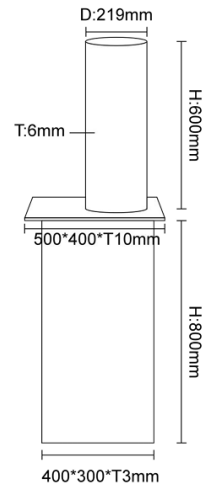
EN-LB101-4

Dimensions And Technical Parameter

Material	carbon steel
Wall Thickness	6mm
Blocking Height	600mm
Blocking Diameter	219mm
Flange Size	D405*T10mm
Embedded Sleeve Size	D325*T3mm
Embedded Sleeve Height	1100mm
Weight	100kg
Rising / Fall Time	4S / 3S
Input Voltage	single phase 220V±5%, 50HZ
Power	370W
Protection Level (waterproof)	IP68
Operation Temperature	- 45°c to 75°c
Control Way	remote control (phone app available)

Color is customized

Automatic Hydraulic Rising Bollard



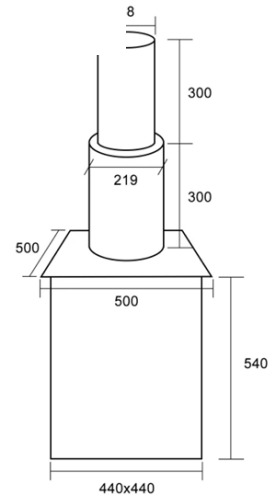
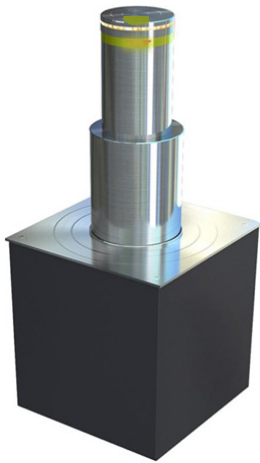
EN-LB101-5

Dimensions And Technical Parameter

Material	304 stainless steel
Wall Thickness	6mm
Blocking Height	600mm
Blocking Diameter	219mm
Square Flange Size	L500*W400*T10mm
Embedded Square Sleeve Size	L400*W300*T3mm
Embedded Sleeve Height	800mm
Weight	95kg
Rising / Fall Time	4S / 3S
Input Voltage	single phase 220V±5%,50HZ
Power	370W
Protection Level (waterproof)	IP68
Operation Temperature	- 45°C to 75°C
Control Way	remote control (phone app available)

Other size, SS316/mild steel material, control way are available

Automatic Hydraulic Rising Bollard



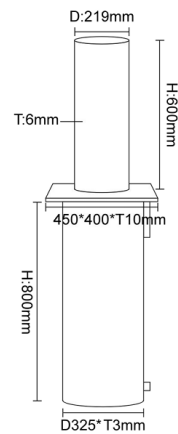
EN-LB101-6

Dimensions And Technical Parameter

Material	304 stainless steel
Wall Thickness	6mm
Blocking Height	600mm (300mm+300mm)
Blocking Diameter	219mm, 168mm
Square Flange Size	L500*W500*T10mm
Embedded Square Sleeve Size	L440*W440*T3mm
Embedded Sleeve Height	300mm
Weight	93kg
Rising / Fall Time	4S / 3S
Input Voltage	single phase 220V±5%,50HZ
Power	370W
Protection Level (waterproof)	IP68
Operation Temperature	- 45°C to 75°C
Control Way	remote control (phone app available)

Other size, SS316/mild steel material, control way are available

Automatic Hydraulic Rising Bollard



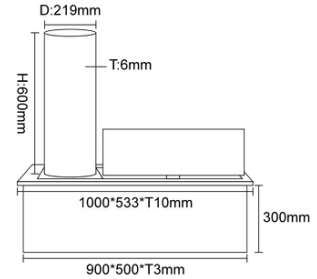
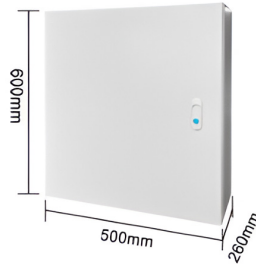
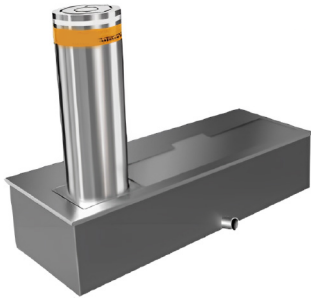
EN-LB101-7

Dimensions And Technical Parameter

Material	304 stainless steel
Wall Thickness	6mm
Blocking Height	600mm
Blocking Diameter	219mm
Square Flange Size	L450*W400*T10mm
Embedded Square Sleeve Size	D325*T3mm
Embedded Sleeve Height	800mm
Weight	85kg
Rising / Fall Time	4-8S
Input Voltage	three phases 3800V±5%, 60HZ
External Motor Power	3700W
Protection Level (waterproof)	IP68
Operation Temperature	- 45°C to 75°C
Control Way	remote control (phone app available)

It can be operated manually if power failure
 Other size, SS316/mild steel material, control way are available

Automatic Electric Rising Bollard



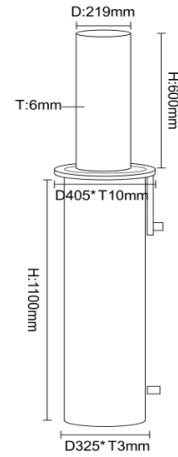
EN-LB101-8

Dimensions And Technical Parameter

Material	304 stainless steel
Wall Thickness	6mm
Blocking Height	600mm
Blocking Diameter	219mm
Base Plate Size	L1000*W533*T10mm
Embedded Square Sleeve Size	L950*W500*T3mm
Embedded Sleeve Height	300mm
Weight	around 210kg
Rising / Fall Time	around 14S
Input Voltage	single phase 220V±5%,50HZ
Power	550W, double
Protection Level (waterproof)	IP68
Operation Temperature	- 45°C to 75°C
Control Way	remote control (phone app available)

Other size, SS316/mild steel material, control way are available

Automatic Hydraulic Rising Bollard



EN-LB101-9

Dimensions And Technical Parameter

Material	stainless steel + acrylic
Wall Thickness	6mm
Blocking Height	600mm
Blocking Diameter	219mm
Flange Size	D405*10mm
Embedded Sleeve Size	D325*T3mm
Embedded Sleeve Height	1100mm
Weight	100kg
Rising / Fall Time	4S / 3S
Input Voltage	single phase 220V±5%,50HZ, or 110V
Power	370W
Protection Level (waterproof)	IP68
Operation Temperature	- 45°c to 75°c
Control Way	remote control (phone app available)

It can customize logo or make advertising on it

UK & Europe



Head Office
Entrar Access Technologies UK LTD
124 City Road, EC1V 2NX
London, United Kingdom
Call: +44(0)207 566 9939
Company registration in England and Wales: 06294297

Middle East & Africa



Entrar Access Technologies
GBC 2
Opposite to Old Airport Arrival Terminal
C Ring Rd, Doha, Qatar
Call: +97444023014

Entrar Line Trading LLC
Smartplace Business Center
Level 2, The Iridium Building
Al Barsha, Dubai - UAE
+971 5080 94464

India & Far East



Entrar Access Technologies India PVT LTD
No A-83, First Floor, Road No 2, Mahipalpur Extn,
New Delhi, Delhi
Call: +918310330566

