



Roller Shutter Door Series

Steel Roller Shutter Door

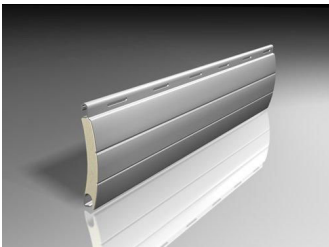


Application

Wind-resistant and anti-theft, high cost-effective steel rolling door is suitable for all industrial and commercial places. Wide range door openings, 0.8-1.5mm thickness industrial grade heavy duty slats. The maximum door opening size can be W12m*H10m. All kinds of curtains can meet various needs of customers, such as thermal insulation, sound insulation, wind resistance, ventilation, beauty and so on.

Strong wind resistance

The arched section, the facade strength is creased by 85%, and the wind resistance level is 12(35m/s). In the hurricane- prone area, special wind-resistant curtains and wind- resistant tracks can ensure the safety of your factory.



Strong corrosion resistance

The surface of the curtain and the track can be double treated with galvanizing and electrostatic spraying, and has strong corrosion resistance. The color of the surface coating can be specially customized to match your building.

Long life

Simple structure, industrial grade materials, low maintenance rate and stable operation.



Technical Data

Application location	Modified atmosphere storehouse
Operation	Automatic
Power supply	Single phase, 220V, or 3phase 380 10%V, 50/60HZ
Max Dimension	W12000×H10,000mm
Wind Resistant	Class 3
Running Speed	5-12m/minutes
Slats	PPGI or stainless steel/304 Stainless S teel
Guide rail material	PPGI or stainless steel, or Aluminium Alloy
Working temperature	-35 to 60°c
Service life	20 years
Color	RAL

Fire Resistance Roller Shutter

1-hour, 2-hour or 4-hour fire rated specifications.

Vertical, Lateral Sliding and Horizontal Escalator purpose design.

Motorised and Non-motorised method of closure

Standard or delay-timer type of closure. Delay timer refers to shutters begin closing after a pre-set time when fire signal is received.



Aluminium Alloy Roller Shutter Door

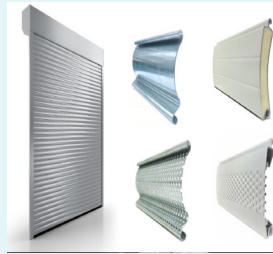
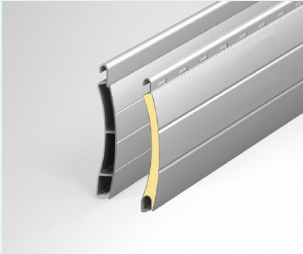
Application

Good thermal insulation and sound insulation effect, can be applied to industrial plants, more suitable for commercial residential garages and other places.



A variety of curtains are available

All kinds of curtains can meet various needs of customers, such as thermal insulation , sound insulation, wind resistance, ventilation, beauty and so on.



Small size Built-in motor

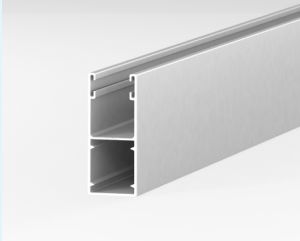
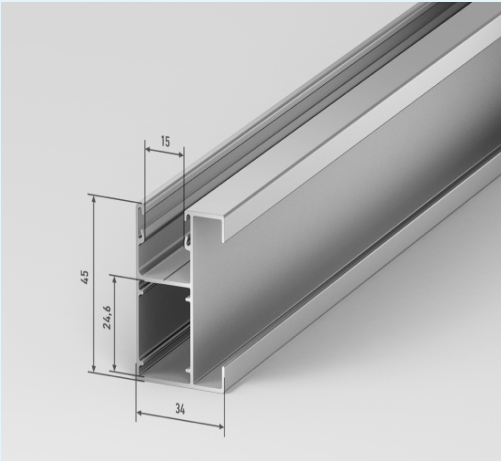
Greatly save the space above the door opening, the appearance is more compact and beautiful.



Large size external motor

The high-end atmospheric appearance is equipped with an industrial-grade external motor, which greatly increase the service life.

Aluminium Alloy Guide Rail



Technical Data

Application location	Modified atmosphere storehouse
Operation	Automatic
Power supply	Single phase, 220V, or 3-phase 380 ± 10%V,50/60Hz
Max Dimension	W8000 × H7000mm
Wind Resistant	35m/s
Running Speed	5-12m/minutes
Slats	Aluminium Alloy
Guide rail material	Aluminium Alloy
Service life	20 years
Color	Aluminium Alloy white or customised

Window Shutters

Application

Wind-resistant and anti-theft, high cost-effective steel rolling door is suitable for all industrial and commercial places. Wide range door openings, 0.8-1.5mm thickness industrial grade heavy duty slats. The maximum door opening size can be W12m*H10m. All kinds of curtains can meet various needs of customers, such as thermal insulation, sound insulation, wind resistance, ventilation, beauty and so on.



Technical instruction :

Operation device : Double Electric tubular motor.

Shutter Slat: Double layer hollow aluminum alloy ,OR inside fill with PU Foam.Standard color: grey white; brown, Surface treatment: Static-electric powder coating. Slats height: 55mm;
Thickness: 0.7mm+0.7mm.

Guiding rail: Aluminum alloy material; Standard color: milk white; Surface treatment: Static-electric powder coating.

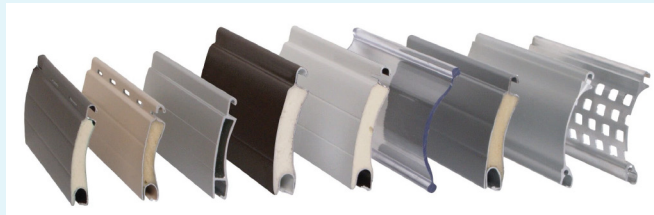
Sealing function: High-quality EPDM sealing brush and sealing rubber in both two sides and bottom of every door.

Top hood cover : Powder coated steel sheet cover, to protect top roller dust. And also make door more beautiful.



Two side Guide rails

Slats Curtain

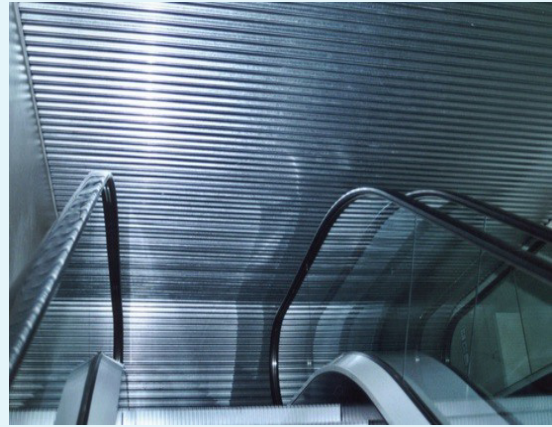


Double motor and control box



Aluminium Alloy Side Cover

Horizontal Rolling Shutter



Specifications

1-hour, 2-hour or 4-hour fire rated specifications.

Straight or Escalator (Zig-Zag) Travel Path.

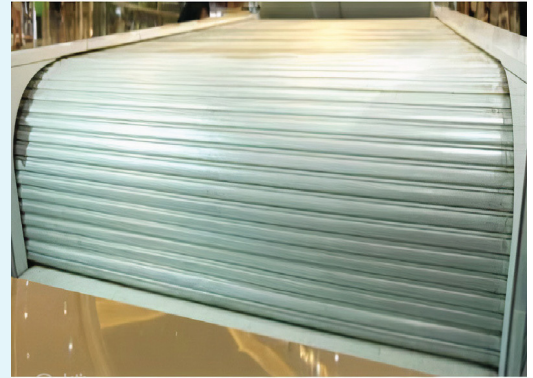
Single-span or double-span at varied lengths.

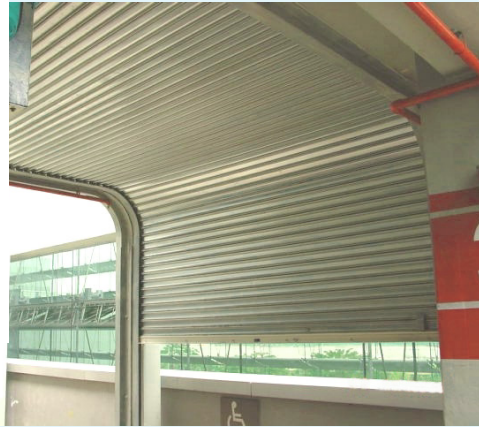
Motorised and non-motorised method of closure.

Standard or delay-timer type of closure. Delay timer refers to shutters begin closing after a pre-set time when fire signal is received.

Max sizes; since we perform continuous R&D, larger sizes can be provided upon consultation.

4 hour: 5.5m(w) x 20m(l) in a single panel.





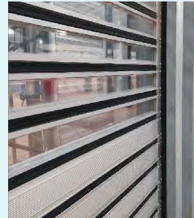


Spiral Rolling Shutter

A spiral rolling shutter is a common industrial door used in factories, indoors and outdoors. It operates efficiently by rolling the door curtain around a spiral-shaped barrel, saving space. Known for sleek design, thermal insulation, and durability, it seals against dust and enhances security. Equipped with multiple sensors, it promotes energy efficiency and maintains a clean, safe factory environment



Spiral Guide



Insulation Panels with Vision Panel



Fully Transparent Panels

Advantages of the Spiral Glide Shutter

The Entrar spiral rolling shutter offers space-saving design and enhanced security with its durable construction and effective sealing properties. Its excellent thermal insulation and dust-proofing capabilities maintain a clean and comfortable working environment, while smooth operation and energy-efficient features ensure seamless functionality in factory settings. Overall, the Entrar spiral rolling shutter provides reliable performance and peace of mind for industrial applications.



Space Efficiency



Enhanced Security
& Protection



Energy Efficiency

The shutter's incorporation of sensors and automation further enhances energy efficiency and convenience, making it a versatile and practical choice for industrial door solutions.



Product Features

Introducing Entrar Access Solutions, a premium high-speed door solution designed for areas demanding both logistics efficiency and top-tier security. With automatic super-fast opening and closing, along with innovative features like curtain roll-up in the guides and customizable options such as transparent Polycarbonate sheet and PVC windows, Opara ensures optimal performance, aesthetics, and reliability.

Entrar offers a perfect solution for areas requiring high logistics efficiency, heavy traffic management, and robust security measures, featuring automatic super-fast opening and closing, curtain roll-up in the guides, full availability in transparent Polycarbonate sheet, reduced air leakage and heat preservation, optional transparent PVC windows, a torsion spring integrated into the guide rail, and a combination of aesthetic appeal, energy efficiency, weather resistance, and reliability.

Specifications

Thickness of Door Curtain(mm)	40mm (polyurethane Industrial Insulation materials and Aluminium surface)
Color	Yellow, Red, Blue, White, Grey (Optional)
Material door frame(mm)	0.7mm aluminium alloy
Motor	Servo Motor(power)
Control Box	IP54 can be waterproof and dust proof even in harsh environment
Safety system	Standard infrared safety protection eye on the both side and safety soft button
Transparent Window	Polyurethane board and double layer structure(option)
Level of wind resistance(m ²)	12 level can resist 32m/s
Open method	Push button (pull switch option)
Opening speed(m/s)	1.2-2.35m/s(Adjustable), Opening 200 times every day
Power(kW)	1.5kW
Voltage	220V/14A/50Hz(Customizes according to customer's country)
Volume(L*W*H/Mm)	6200*900*900,6000*900*900,7300*900*900,7300*900*900
Weight(kg)	950kg, 900kg,1.5t, 1t



STRUCTURES



Other Informations

The safety features of the door include standard infrared safety photoelectric protection (Omron), with optional safety enhancements such as a safety bottom edge (BKJ) and light curtain (0.3m-1m). The door's opening methods consist of double-sided manual buttons as standard, complemented by radar, geomagnetism, pulling rope, remote control, bluetooth, and card access control.

Installation requirements dictate a 1070mm space for the head of the door, 500mm for the motor side, and 310mm for the non-motor side, barring special cases. In case of power failure, a manual opening device serves as the emergency solution. The motor installation offers flexibility, accommodating placements on the left, right, front, or even built-in configurations.

UK & Europe



Head Office
Entrar Access Technologies UK LTD
124 City Road, EC1V 2NX
London, United Kingdom
Call: +44(0)207 566 3939

Company registration in England and Wales: 06294297

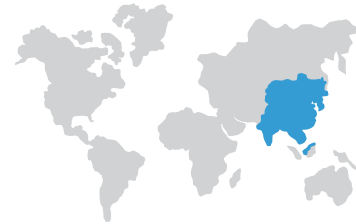
Middle East & Africa



Entrar Access Technologies
GBC 2
Opposite to Old Airport Arrival Terminal
C Ring Rd, Doha, Qatar
Call: +97444023014

Entrar Line Trading L.L.C
Smartplace Business Center
Level 2, The Iridium Building
Al Barsha, Dubai - UAE
+971 5080 94464

India & Far East



Entrar Access Technologies India PVT LTD
No A-83, First Floor, Road No 2, Mahipalpur Extn,
New Delhi, Delhi
Call: +918310330566

