

# ENTRAR

## Automatic Bollard Series



# Automatic Bollard Series

Automatic bollards, also known as lifting bollards, lifting road bollards, anti-collision road bollards, isolation bollards, etc., are a kind of lifting post used to control vehicle traffic. Automatic bollards are widely used in many occasions such as urban transportation, military and national important agency gates and surrounding areas, pedestrian streets, highway toll stations, airports, schools, banks, large clubs, parking lots, etc. By restricting passing vehicles, it effectively ensures the traffic order and the safety of major facilities and places



## Mainly Fuction

- Perimeter security: Protecting buildings, facilities, and critical infrastructure.
- Traffic control: Managing vehicle flow, creating pedestrian zones, and preventing unauthorized access.
- Event management: Controlling access to venues and ensuring public safety.
- Parking lot control: Restricting unauthorized entry and preventing tailgating.
- Anti-theft Function: Install at parking space or in front of warehouse to protect the property.



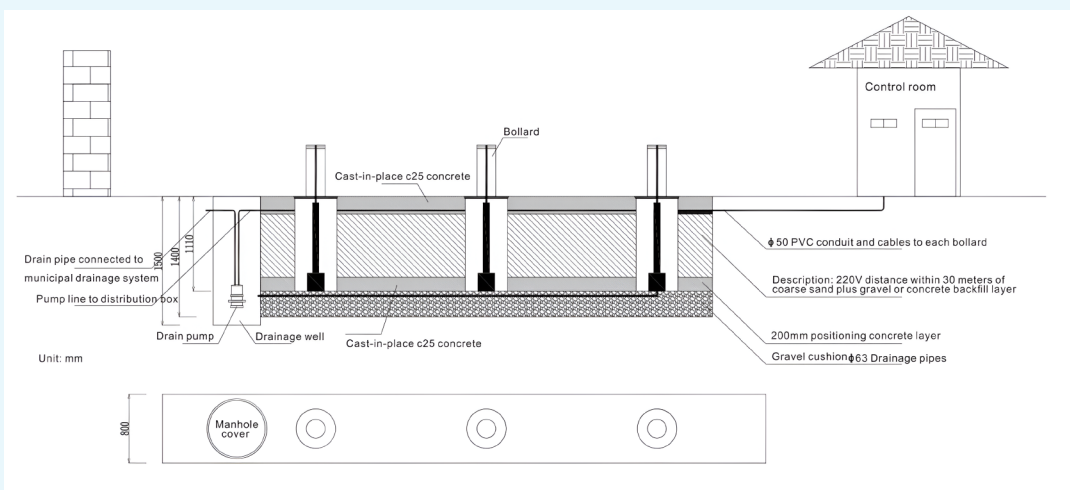
## Features

- **Automatic operation:** Controlled remotely or through integrated systems for efficient management.
- **Retractable design:** Ability to be lowered into the ground when not in use, maintaining a clean aesthetic.
- **Durable construction:** Built to withstand impacts from vehicles, ensuring security and longevity.
- **Customization options:** Available in various sizes, materials, and finishes to match specific requirements.

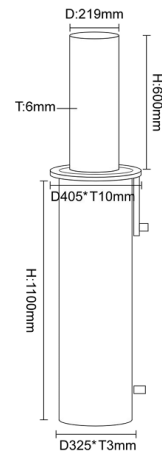
## Usage Scenario

Government and Diplomatic Buildings, Pedestrian Zones, Traffic Management Places, Company Building, Parking Lot, Parking Space, Loading Docks, Schools and Universities, Hospitals and Healthcare Facilities, Retail Centers, Commercial and Industrial Sites, Urban Environments etc.

## Installation Diagram



# Automatic Hydraulic Rising Bollard



EN-LB101-1

## Dimensions And Technical Parameter

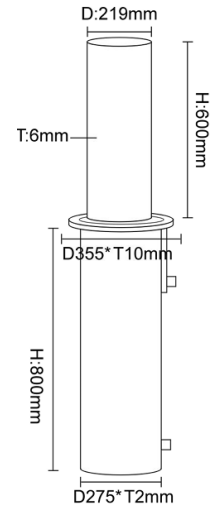
Material	304 stainless steel
Wall Thickness	6mm
Blocking Height	600mm
Blocking Diameter	219mm
Flange Size	D405*10mm
Embedded Sleeve Size	D325*T3mm
Embedded Sleeve Height	1100mm
Weight	100kg
Rising / Fall Time	4S / 3S
Input Voltage	single phase 220V±5%,50HZ, or 110V
Power	370W
Protection Level (waterproof)	IP68
Operation Temperature	- 45oc to 75oc
Control Way	remote control (phone app available)

Other size, SS316/mild steel material, control way are available

# Automatic Hydraulic Rising Bollard



EN-LB101-2

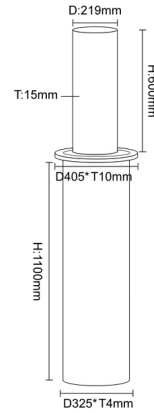


## Dimensions And Technical Parameter

Material	304 stainless steel
Wall Thickness	6mm
Blocking Height	600mm
Blocking Diameter	219mm
Flange Size	D355*10mm
Embedded Sleeve Size	D275*T2mm
Embedded Sleeve Height	800mm
Weight	65kg
Rising / Fall Time	4S / 3S
Input Voltage	single phase 220V±5%,50HZ, or 110V
Power	370W
Protection Level (waterproof)	IP68
Operation Temperature	- 45°C to 75°C
Control Way	remote control (phone app available)

Other size, SS316/mild steel material, control way are available

# Automatic Hydraulic Rising Bollard-Crash-Rated Type



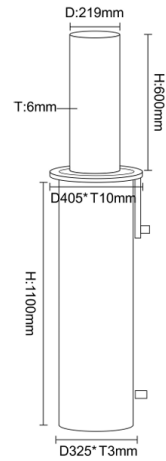
EN-LB101-3

## Dimensions And Technical Parameter

Material	304 stainless steel
Wall Thickness	15mm
Blocking Height	600mm
Blocking Diameter	219mm
Flange Size	D405*T10mm
Embedded Sleeve Size	D325*T4mm
Embedded Sleeve Height	1100mm
Weight	around 200kg
Rising / Fall Time	4S / 3S
Input Voltage	single phase 220V±5%, 50HZ
Power	370W
Protection Level (waterproof)	IP68
Operation Temperature	- 45°C to 75°C
Control Way	remote control (phone app available)

K8 Crash Rating, Other size, SS316/mild steel material, control way are available

# Automatic Hydraulic Rising Bollard



EN-LB101-4

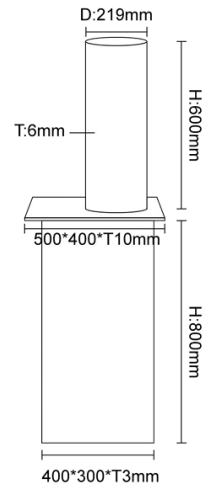
## Dimensions And Technical Parameter

Material	carbon steel
Wall Thickness	6mm
Blocking Height	600mm
Blocking Diameter	219mm
Flange Size	D405*T10mm
Embedded Sleeve Size	D325*T3mm
Embedded Sleeve Height	1100mm
Weight	100kg
Rising / Fall Time	4S / 3S
Input Voltage	single phase 220V±5%, 50HZ
Power	370W
Protection Level (waterproof)	IP68
Operation Temperature	- 45°C to 75°C
Control Way	remote control (phone app available)

Color is customized



# Automatic Hydraulic Rising Bollard



EN-LB101-5

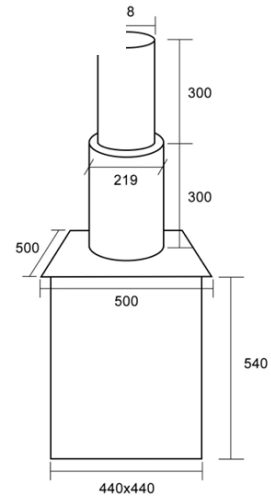
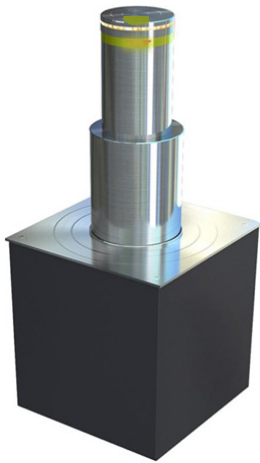
## Dimensions And Technical Parameter

Material	304 stainless steel
Wall Thickness	6mm
Blocking Height	600mm
Blocking Diameter	219mm
Square Flange Size	L500*W400*T10mm
Embedded Square Sleeve Size	L400*W300*T3mm
Embedded Sleeve Height	800mm
Weight	95kg
Rising / Fall Time	4S / 3S
Input Voltage	single phase 220V±5%,50HZ
Power	370W
Protection Level (waterproof)	IP68
Operation Temperature	- 45°c to 75°c
Control Way	remote control (phone app available)

Other size, SS316/mild steel material, control way are available



# Automatic Hydraulic Rising Bollard



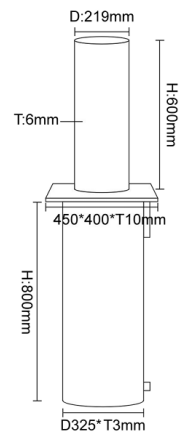
EN-LB101-6

## Dimensions And Technical Parameter

Material	304 stainless steel
Wall Thickness	6mm
Blocking Height	600mm (300mm+300mm)
Blocking Diameter	219mm, 168mm
Square Flange Size	L500*W500*T10mm
Embedded Square Sleeve Size	L440*W440*T3mm
Embedded Sleeve Height	300mm
Weight	93kg
Rising / Fall Time	4S / 3S
Input Voltage	single phase 220V±5%,50HZ
Power	370W
Protection Level (waterproof)	IP68
Operation Temperature	- 45°C to 75°C
Control Way	remote control (phone app available)

Other size, SS316/mild steel material, control way are available

# Automatic Hydraulic Rising Bollard



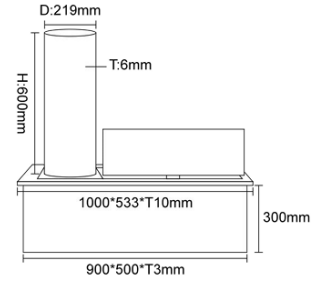
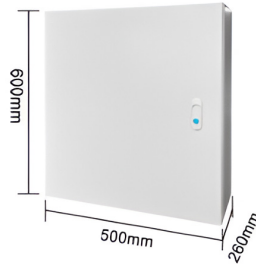
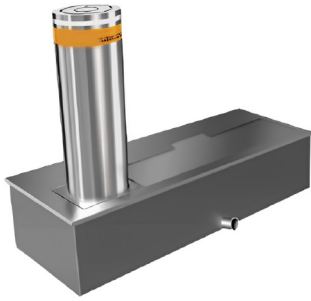
EN-LB101-7

## Dimensions And Technical Parameter

Material	304 stainless steel
Wall Thickness	6mm
Blocking Height	600mm
Blocking Diameter	219mm
Square Flange Size	L450*W400*T10mm
Embedded Square Sleeve Size	D325*T3mm
Embedded Sleeve Height	800mm
Weight	85kg
Rising / Fall Time	4-8S
Input Voltage	three phases 3800V±5%, 60HZ
External Motor Power	3700W
Protection Level (waterproof)	IP68
Operation Temperature	- 45°C to 75°C
Control Way	remote control (phone app available)

It can be operated manually if power failure  
 Other size, SS316/mild steel material, control way are available

# Automatic Electric Rising Bollard



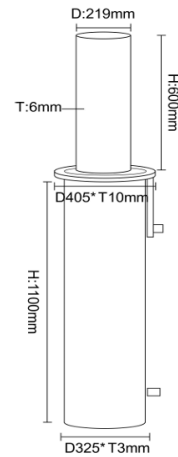
EN-LB101-8

## Dimensions And Technical Parameter

Material	304 stainless steel
Wall Thickness	6mm
Blocking Height	600mm
Blocking Diameter	219mm
Base Plate Size	L1000*W533*T10mm
Embedded Square Sleeve Size	L950*W500*T3mm
Embedded Sleeve Height	300mm
Weight	around 210kg
Rising / Fall Time	around 14S
Input Voltage	single phase 220V±5%,50HZ
Power	550W, double
Protection Level (waterproof)	IP68
Operation Temperature	- 45°C to 75°C
Control Way	remote control (phone app available)

Other size, SS316/mild steel material, control way are available

# Automatic Hydraulic Rising Bollard



EN-LB101-9

## Dimensions And Technical Parameter

Material	stainless steel + acrylic
Wall Thickness	6mm
Blocking Height	600mm
Blocking Diameter	219mm
Flange Size	D405*10mm
Embedded Sleeve Size	D325*T3mm
Embedded Sleeve Height	1100mm
Weight	100kg
Rising / Fall Time	4S / 3S
Input Voltage	single phase 220V±5%,50HZ, or 110V
Power	370W
Protection Level (waterproof)	IP68
Operation Temperature	- 45°C to 75°C
Control Way	remote control (phone app available)

It can customize logo or make advertising on it

### UK & Europe



**Head Office**  
**Entrar Access Technologies UK LTD**  
124 City Road,  
EC1V 2NX  
**London, United Kingdom**  
Call: +44 7949 265624  
England and Wales - CR: 06294297

### Middle East & Africa



**Entrar Access Technologies**  
GBC 2,  
Opposite to Old Airport Arrival Terminal  
**C Ring Rd, Doha, Qatar**  
Call: +974 4402 3014

**Entrar Line Trading L.L.C**  
Smartplace Business Center  
Level 2, The Iridium Building  
**Al Barsha, Dubai, UAE**  
Call: +971 5080 94464

### India & Far East



**Entrar Access Technologies India Pvt Ltd**  
No A-83, First Floor,  
Road No 2, Mahipalpur Extn  
**New Delhi, India**  
Call: +91 8310330566

