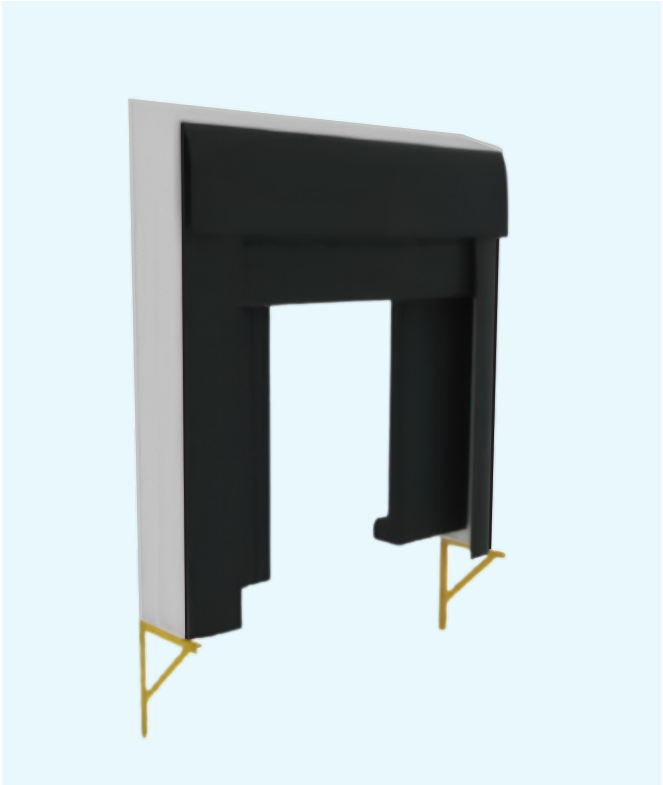




# **Entrar**

## **Loading Bay Solutions**

# Inflatable Dock Seal



## The Function of the Inflatable Dock Seal

By continuously inflating the airbags with a blower, the inflatable dock seal expands to fit tightly against the truck body, achieving high sealing performance and preventing the exchange of cold and hot air between the interior and exterior environments.



Easy Operation

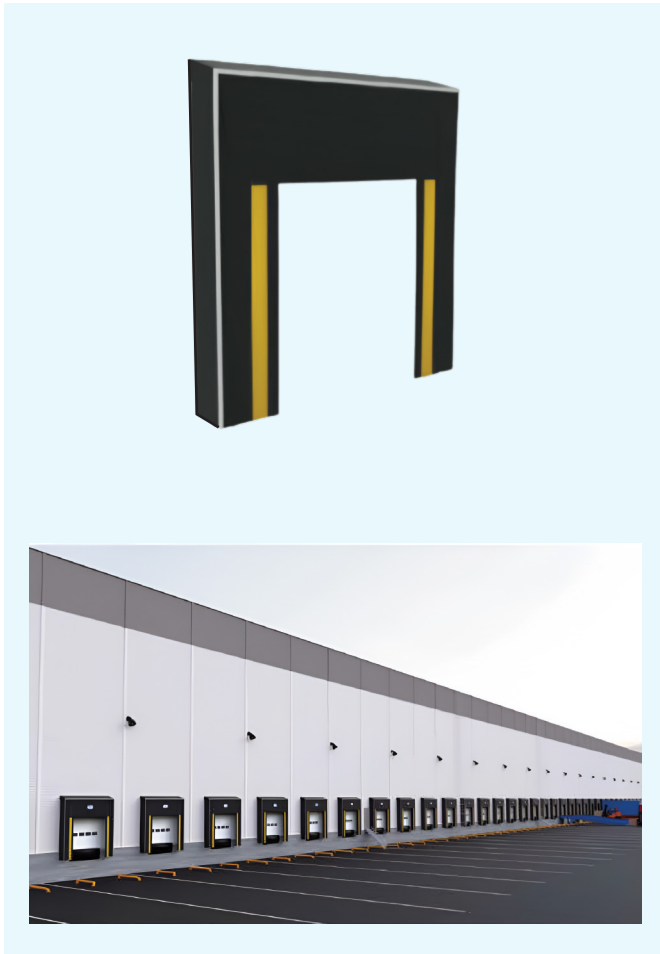


Low Voltage Control



Customized Load Capacity

## Mechanical Dock Seal



### The Function of the Mechanical Dock Seal (Curtain, Dock Shelter)

By tightly contacting the truck body with the top and side curtains, it achieves a preliminary rainproof sealing effect.

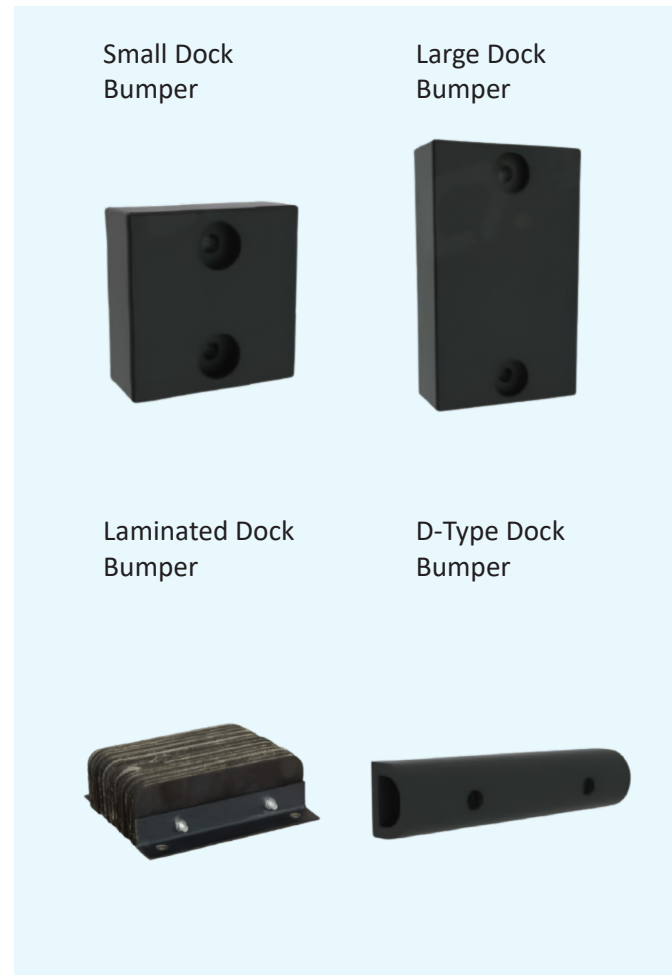
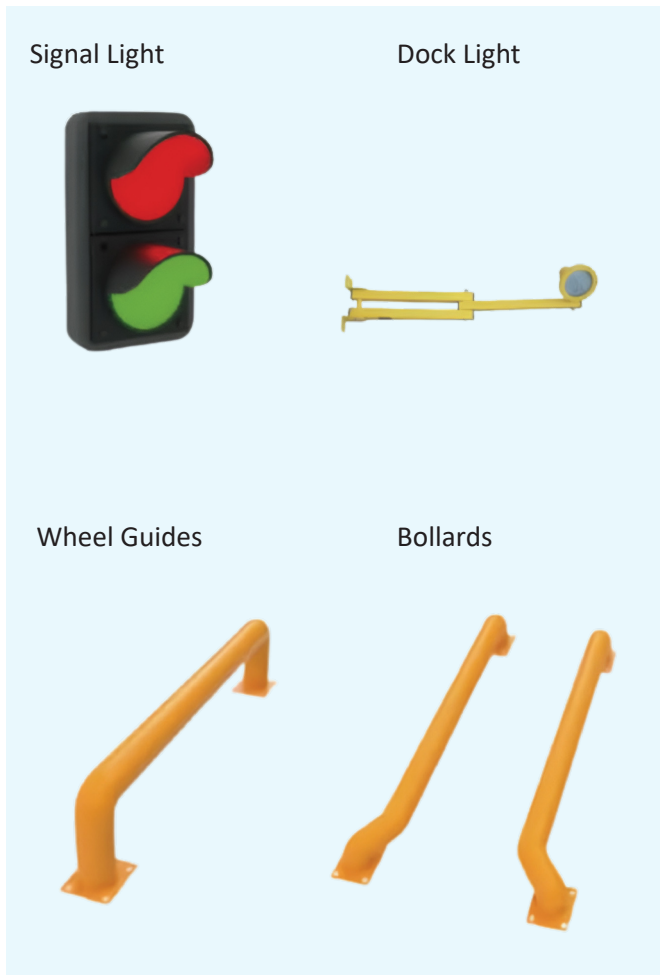
## Foam Dock Seal



### The Function of the Foam Dock Seal (Compression Dock Seal, Pad Dock Seal)

Mounted on the wall surface, the foam dock seal achieves its sealing function by the truck compressing the foam pads, utilizing the foam's rebound ability to maintain a tight seal.

# Accessories



## The Function of the Wheel Guides

Wheel guides are installed on the ground in front of the loading dock to help trucks accurately park at the loading position, effectively preventing damage to the dock seals and thereby extending their lifespan. The wheel guides are welded from 160mm diameter steel pipes and are fixed to the ground using concrete expansion bolts. The ground for installing the wheel guides is concrete.

## The Function of the Bollards

Bollards are installed indoors to effectively prevent forklifts from damaging walls and to ensure the correct and safe movement of trucks when approaching the loading dock. The bollards are made of 100-160mm round pipes and can be customized in shape according to customer needs.

## The Function of Dock Bumpers

Rubber dock bumpers effectively prevent loading and unloading vehicles from damaging building walls, ensuring the safe docking of vehicles at the loading dock. Dock bumpers are made from high-strength, tear-resistant industrial rubber. The specific types are as follows:

Small Dock Bumper (250*250*100mm)	Large Dock Bumper (400*200*100mm)	Laminated Dock Bumper (300*200*100mm)
D-Type Dock Bumper (1000*150*150mm)	D-Type Dock Bumper (2000*200*200mm)	



# Inflatable Dock Seal

## Specification Size

Size	Top telescoping	Side expansion	Fan power	Airtightness performance
3400*3400	1200mm	800mm	380v	95%
3400*3600	1200mm	800mm	380v	95%
3400*3800	1200mm	800mm	380v	95%
3600*3800	1200mm	800mm	380v	95%
3600*4000	1200mm	800mm	380v	95%
3600*4500	1200mm	800mm	380v	95%

Note: The top airbag extension length can reach 1200mm, and the side extension width is 800mm.

# Mechanical Dock Seal

## Specification Size

Size	Top hanging curtain	Side hanging curtain	Skeleton architecture	Sealing performance
3200*3400	1000-1200mm	600mm	Aluminum alloy	Rain proof/enclosed 70%
3400*3400	1000-1200mm	600mm	Aluminum alloy	Rain proof/enclosed 70%
3400*3600	1000-1200mm	600mm	Aluminum alloy	Rain proof/enclosed 70%
3600*3800	1000-1200mm	600mm	Aluminum alloy	Rain proof/enclosed 70%

Note: Customization of Special Size Consultation

# Foam Dock Seal

## Specification Size

Size	Sponge width	Sponge thickness	Curtain length	Airtightness performance
2600*2800	300mm	250mm	1000mm	95%
3000*3000	300mm	250mm	1000mm	95%
3000*3300	300mm	250mm	1000mm	95%

Note: Customization of Special Size Consultation

## UK & Europe



**Head Office**  
**Entrar Access Technologies UK LTD**  
124 City Road,  
EC1V 2NX  
**London, United Kingdom**  
Call: +44 7949 265624  
England and Wales - CR: 06294297

## Middle East & Africa



**Entrar Access Technologies**  
GBC 2,  
Opposite to Old Airport Arrival Terminal  
**C Ring Rd, Doha, Qatar**  
Call: +974 4402 3014

**Entrar Line Trading L.L.C**  
Smartplace Business Center  
Level 2, The Iridium Building  
**Al Barsha, Dubai, UAE**  
Call: +971 5080 94464

## India & Far East



**Entrar Access Technologies India Pvt Ltd**  
No A-83, First Floor,  
Road No 2, Mahipalpur Extn  
**New Delhi, India**  
Call: +91 8310330566

