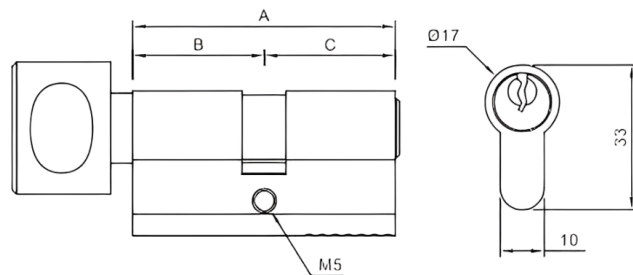


Cylinders



Europrofile Key and Knob Turn Cylinder

EN-CYL-TD1



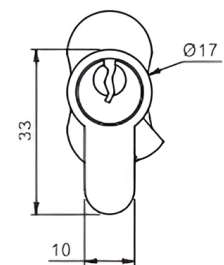
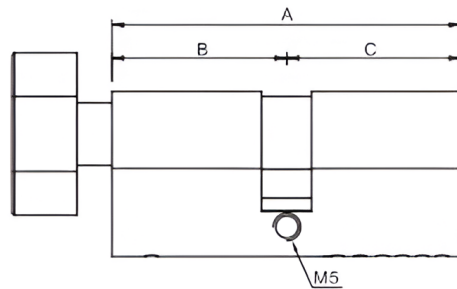
Specifications

- Material : Quality Solid Brass Body and Pin
- Keys : 3 or 5 Brass keys / other quantity
- Key type : Dimple key, Regular key
- Key management function : MK, GMK, GGMK, KD, KA Construction key
- Pins : 6 Brass Pins Standard, 10 pin high security with two line pins, other sizes available
- Degree : 0° or 30° angle offset cam inhibits knock through
- Standard : Conforms to EN1303
- Fastening screw : 65 mm (standard) other lengths are available according to different backset

Item Code	A	B	C
EN-CYL-TD1-3030	60	30	30
EN-CYL-TD1-3535	70	35	35
EN-CYL-TD1-4040	80	40	40
EN-CYL-TD1-4545	90	45	45
EN-CYL-TD1-5050	100	50	50

Europrofile Key and Peanut shape Turn Cylinder

EN-CYL-TD2



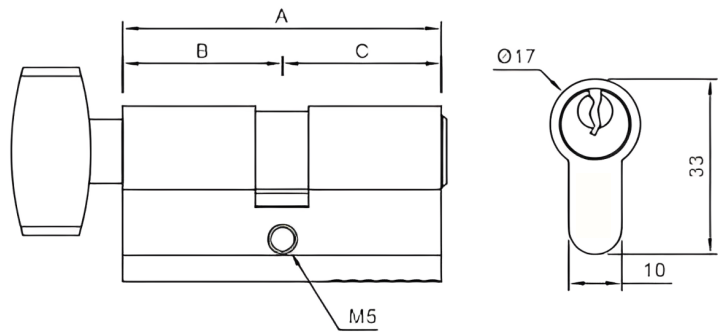
Specifications

- Material : Quality Solid Brass Body and Pin
- Keys : 3 or 5 Brass keys / other quantity
- Key type : Dimple key, Regular key
- Key management function : MK, GMK, GGMK, KD, KA Construction key
- Pins : 6 Brass Pins Standard, 10 pin high security with two line pins, other sizes available
- Degree : 0° or 30° angle offset cam inhibits knock through
- Standard : Conforms to EN1303
- Fastening screw : 65 mm (standard) other lengths are available according to different backset

Item Code	A	B	C
EN-CYL-TD2-3030	60	30	30
EN-CYL-TD2-3535	70	35	35
EN-CYL-TD2-4040	80	40	40
EN-CYL-TD2-4545	90	45	45
EN-CYL-TD2-5050	100	50	50

Europrofile Key and Knob Turn Cylinder

EN-CYL-TD3



Specifications

- Material : Quality Solid Brass Body and Pin
- Keys : 3 or 5 Brass keys / other quantity
- Key type : Dimple key, Regular key
- Key management function : MK, GMK, GGMK, KD, KA Construction key
- Pins : 6 Brass Pins Standard, 10 pin high security with two line pins, other sizes available
- Degree : 0° or 30° angle offset cam inhibits knock through
- Standard : Conforms to EN1303
- Fastening screw : 65 mm (standard) other lengths are available according to different backset

Item Code	A	B	C
EN-CYL-TD3-3030	60	30	30
EN-CYL-TD3-3535	70	35	35
EN-CYL-TD3-4040	80	40	40
EN-CYL-TD3-4545	90	45	45
EN-CYL-TD3-5050	100	50	50

Thumbturn Cylinder With Key

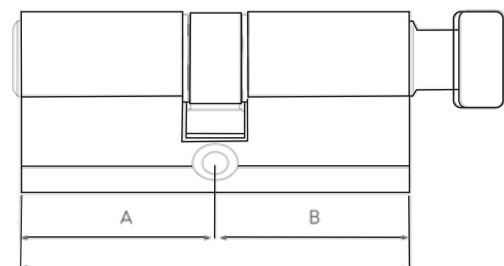
EN-CYL-TD4



Item code	Dim A (mm)	Dim B (mm)	Dim C (mm)
EN-CYL-TD4-3030	60	30	30
EN-CYL-TD4-3535	70	35	35
EN-CYL-TD4-4040	80	40	40
EN-CYL-TD4-4545	90	45	45
EN-CYL-TD4-5050	100	50	50

Specifications

- BS EN 1303:2015
- Size available from 60-100mm.
- 0° or 30° angle offset cam inhibits Knock through.
- 6 Brass pins standard.
- 10 pin High security with two line pins.
- Material : Quality solid brass body and plug



Features

- Suitable for wooden and steel door.
- Key option
Quantity : 3 key /other quantity as request
- Key type : Regular key (Simple key/Conventional key)
Dimple key (Computer key/ Reversible key)

Finishes



SSS



PSS



Black



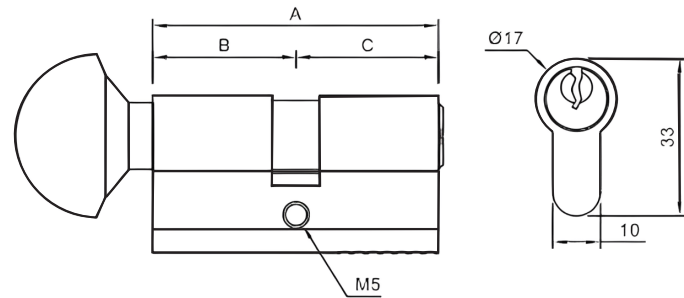
PVD



Satin Brass

Europrofile Key and Arc Shaped Thumbturn Cylinder

EN-CYL-TD5



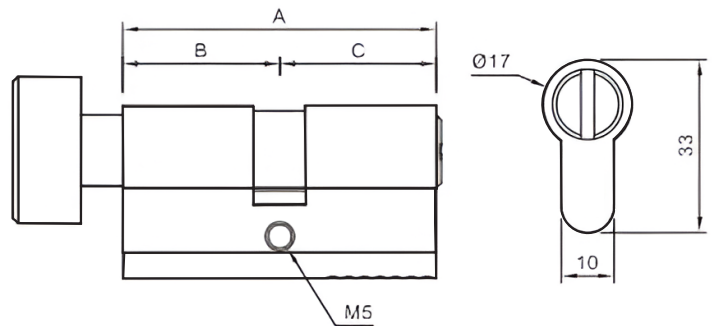
Specifications

- Material : Quality Solid Brass Body and Pin
- Keys : 3 or 5 Brass keys / other quantity
- Key type : Dimple key, Regular key
- Key management function : MK, GMK, GGMK, KD, KA Construction key
- Pins : 6 Brass Pins Standard, 10 pin high security with two line pins, other sizes available
- Degree : 0° or 30° angle offset cam inhibits knock through
- Standard : Conforms to EN1303
- Fastening screw : 65 mm (standard) other lengths are available according to different backset

Item Code	A	B	C
EN-CYL-TD5-3030	60	30	30
EN-CYL-TD5-3535	70	35	35
EN-CYL-TD5-4040	80	40	40

Europrofile Bathroom Turn Cylinder

EN-CYL-TE1



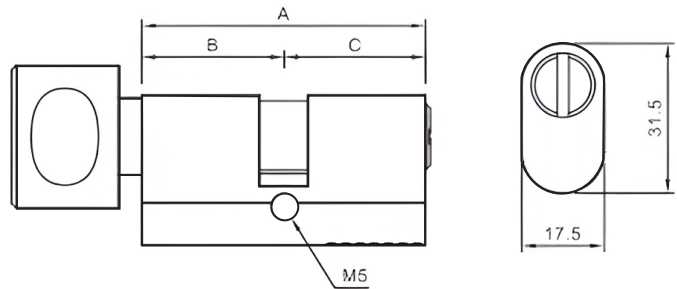
Specifications

- Material : Quality Solid Brass Body and Pin
- Keys : 3 or 5 Brass keys / other quantity
- Key type : Dimple key, Regular key
- Key management function : MK, GMK, GGМК, KD, KA Construction key
- Pins : 6 Brass Pins Standard, 10 pin high security with two line pins, other sizes available
- Degree : 0° or 30° angle offset cam inhibits knock through
- Standard : Conforms to EN1303
- Fastening screw : 65 mm (standard) other lengths are available according to different backset

Item Code	A	B	C
EN-CYL-TE1-3030	60	30	30
EN-CYL-TE1-3535	70	35	35
EN-CYL-TE1-4040	80	40	40

Bathroom Cylinder

EN-CYL-TE2



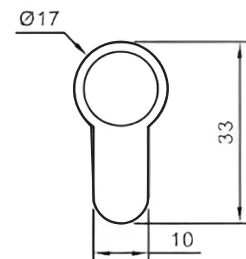
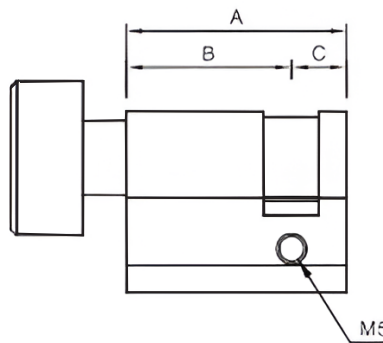
Specifications

- Material : Quality Solid Brass Body and Pin
- Keys : 3 or 5 Brass keys / other quantity
- Key type : Dimple key, Regular key
- Key management function : MK, GMK, GGMK, KD, KA Construction key
- Pins : 6 Brass Pins Standard, 10 pin high security with two line pins, other sizes available
- Degree : 0° or 30° angle offset cam inhibits knock through
- Standard : Conforms to EN1303
- Fastening screw : 65 mm (standard) other lengths are available according to different backset

Item Code	A	B	C
EN-CYL-TE2-3030	60	30	30
EN-CYL-TE2-3535	70	35	35
EN-CYL-TE2-4040	80	40	40

Turn Half Cylinder

EN-CYL-TS1



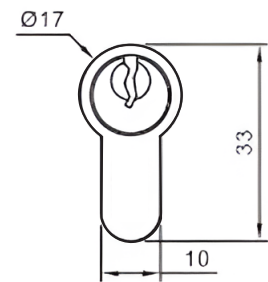
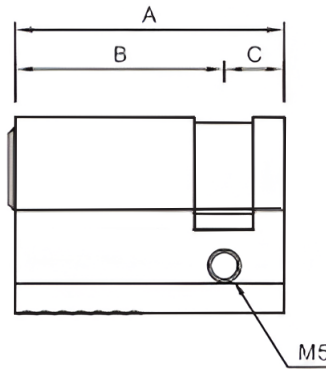
Specifications

- Material : Quality Solid Brass Body and Pin
- Keys : 3 or 5 Brass keys / other quantity
- Key type : Dimple key, Regular key
- Key management function : MK, GMK, GGMK, KD, KA Construction key
- Pins : 6 Brass Pins Standard, 10 pin high security with two line pins, other sizes available
- Degree : 0° or 30° angle offset cam inhibits knock through
- Standard : Conforms to EN1303
- Fastening screw : 65 mm (standard) other lengths are available according to different backset

Item Code	A	B	C
EN-CYL-TS1-3010	40	30	10
EN-CYL-TS1-3510	45	35	10

Europrofile Half Cylinder with key

EN-CYL-KS



Specifications

- Material : Quality Solid Brass Body and Pin
- Keys : 3 or 5 Brass keys / other quantity
- Key type : Dimple key, Regular key
- Key management function : MK, GMK, GGMK, KD, KA Construction key
- Pins : 6 Brass Pins Standard, 10 pin high security with two line pins, other sizes available
- Degree : 0° or 30° angle offset cam inhibits knock through
- Standard : Conforms to EN1303
- Fastening screw : 65 mm (standard) other lengths are available according to different backset

Item Code	A	B	C
EN-CYL-KS-3010	40	30	10
EN-CYL-KS-3510	45	35	10

Double Cylinder

EN-CYL-KD1



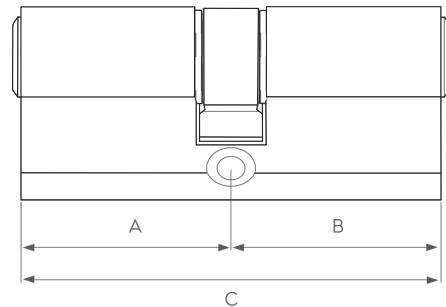
Item Code	Dim A (mm)	Dim B (mm)	Dim C (mm)
EN-CYL-KD1-3030	60	30	30
EN-CYL-KD1-3535	70	35	35
EN-CYL-KD1-4040	80	40	40
EN-CYL-KD1-4545	90	45	45
EN-CYL-KD1-5050	100	50	50

Specifications

- BS EN 1303:2015
- 0° or 30° angle offset cam inhibits Knock through.
- 6 Brass pins standard.
- 10 pin High security with two line pins.

Features

- Material : Quality solid brass body and plug
- Key option
Quantity : 3 key /other quantity as request
- Key type : Regular key(Simple key/Conventional key)
Dimple key(Computer key/ Reversible key)
- Size available from 60-100 mm.
- Suitable for wooden and steel door.



Finishes



SSS



PSS



Black



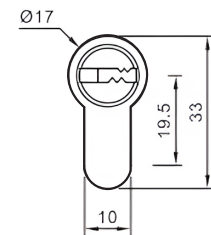
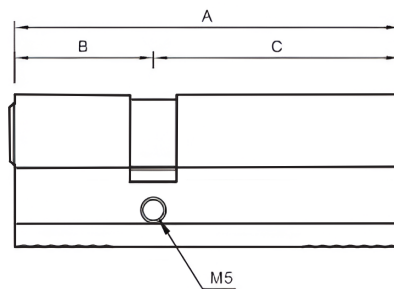
PVD



Satin Brass

Europrofile Offset Double Key Cylinder

EN-CYL-KD2



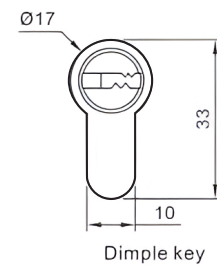
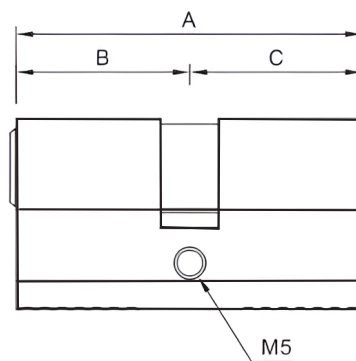
Specifications

- Material : Quality Solid Brass Body and Pin
- Keys : 3 or 5 Brass keys / other quantity
- Key type : Dimple key, Regular key
- Key management function : MK, GMK, GGMK, KD, KA Construction key
- Pins : 6 Brass Pins Standard, 10 pin high security with two line pins, other sizes available
- Degree : 0° or 30° angle offset cam inhibits knock through
- Standard : Conforms to EN1303
- Fastening screw : 65 mm (standard) other lengths are available according to different backset

Item Code	A	B	C
EN-CYL-KD2-2535	60	25	35
EN-CYL-KD2-3040	70	30	40
EN-CYL-KD2-3050	80	30	50
EN-CYL-KD2-4050	90	40	50
EN-CYL-KD2-4060	100	40	60

High Security Europrofile Double Key Cylinder

EN-CYL-KD3



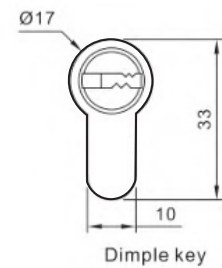
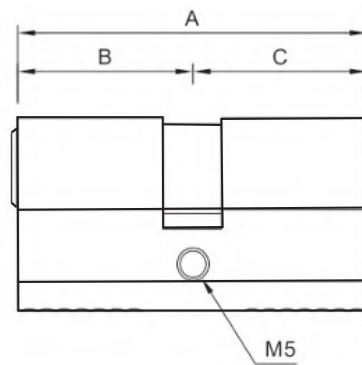
Specifications

- Material : Quality Solid Brass Body and Pin
- Keys : 3 or 5 Brass keys / other quantity
- Key type : Dimple key, Regular key
- Key management function : MK, GMK, GGMK, KD, KA Construction key
- Pins : 6 Brass Pins Standard, 10 pin high security with two line pins, other sizes available
- Degree : 0° or 30° angle offset cam inhibits knock through
- Standard : Conforms to EN1303
- Fastening screw : 65 mm (standard) other lengths are available according to different backset

Item Code	A	B	C
EN-CYL-KD3-3030	60	30	30
EN-CYL-KD3-3535	70	35	35
EN-CYL-KD3-4040	80	40	40
EN-CYL-KD3-4545	90	45	45
EN-CYL-KD3-5050	100	50	50

High Security Europrofile Double Key Cylinder

EN-CYL-KD4



Specifications

- Material : Quality Solid Brass Body and Pin
- Keys : 3 or 5 Brass keys / other quantity
- Key type : Dimple key, Regular key
- Key management function : MK, GMK, GGMK, KD, KA Construction key
- Pins : 6 Brass Pins Standard, 10 pin high security with two line pins, other sizes available
- Degree : 0° or 30° angle offset cam inhibits knock through
- Standard : Conforms to EN1303
- Fastening screw : 65 mm (standard) other lengths are available according to different backset

Item Code	A	B	C
EN-CYL-KD4-3030	60	30	30
EN-CYL-KD4-3535	70	35	35
EN-CYL-KD4-4040	80	40	40
EN-CYL-KD4-4545	90	45	45
EN-CYL-KD4-5050	100	50	50

ACY Cylinder Schlage C keyway

EN-CYD



Specifications

- ANSI Mortise cylinder standards
- 5 pins, 6 pins available
- SCHLAGE, kwikset, Weiser & pin-in-pin system
- Mortise cylinder with cam
- Master key system is available
- Material : Brass
- Finish : 626/US26D, Satin chrome

Item code	Length
EN-CYD-01	1- 1/8" (28.5mm)
EN-CYD-02	1-1/4" (31.8mm)
EN-CYD-03	1-3/8" (35mm)
EN-CYD-04	1-3/4" (44.5mm)

Small format interchangeable core cylinder

EN-CIC

- Mortise cylinder IC Core housing, small format best, 26D
- Mortise cylinder IC Core housing, Big format Schlage "C", 26D



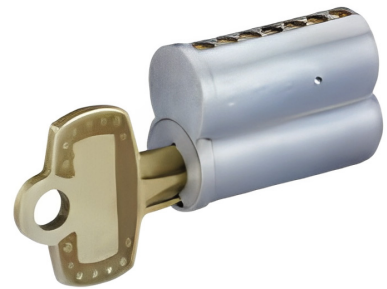
Item code	Length
EN-CIC-01	1- 1/8" (28.5mm)
EN-CIC-02	1-1/4" (31.8mm)

Small format Interchangeable Core (SFIC)

EN-SFIC

Specifications

- Small format SFIC accept either 6- or 7-pin cores for mortise and rim housings, cylindrical lock.
- When ordering cores only, control keys are not furnished.
- Control keys are required, they must be specified



Interchangeable Core Housing (SFIC Housing)

EN-CIC

Specifications

- Compatible with small format IC cores
- Solid brass construction
- Installed in the locking hardware in the same manner as a conventional cylinder

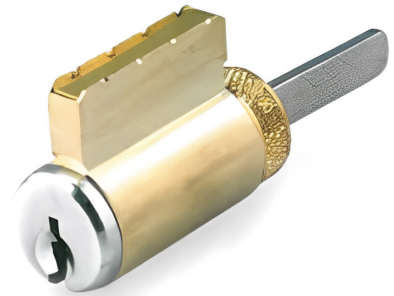


Knob / Lever Cylinder

EN-CYD-001

Specifications

- Solid brass construction
- Tailpiece converts between horizontal & vertical positions
- Tailpiece length can be adjustable.
- Screw-on retaining cap design
- Different finish is available

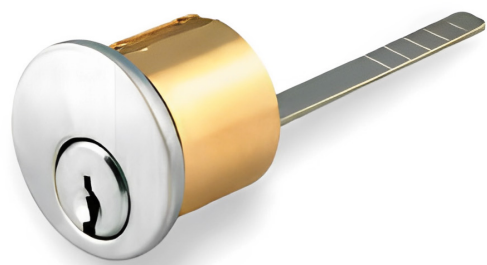


Rim cylinder

EN-CYD-002

Specifications

- Solid brass construction
- Tailpiece converts between horizontal & vertical positions
- Tailpiece length can be adjustable.
- Screw-on retaining cap design
- Different finish is available



Mortise T-Turn Cylinder

EN-CYD-003

Specifications

- Solid brass construction
- Different finish is available



Rim Thumb Turn Cylinder

EN-CYD-004

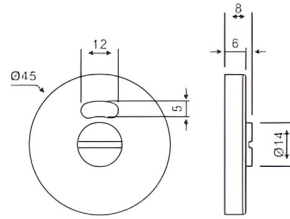
Specifications

- Easy turn
- Ideal for use in panic devices for lockdown situations
- Different finish is available



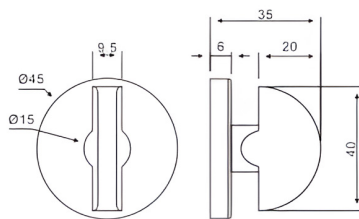
Indicator

EN-CYD-005



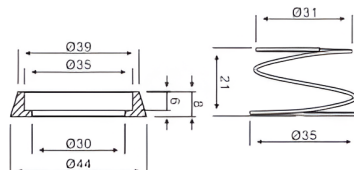
Thumbturn

EN-CYD-006







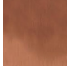









Cylinder Guard

EN-CYD-007



Finishes

SSS	Satin Stainless Steel	
PSS	Polished Stainless Steel	
PVD	Physical Vapor Deposition	
BP	Polished Brass	
GP	Gold Plated	
AB	Antique Brass	
AC	Antique Copper	
CP	Polished Chrome	
SN	Satin Nickel	
SCP	Satin Chrome Plate	
SNP	Satin Nickel Plate	
P&L	Polish + Clear coating	
S&L	Satin + Clear coating	
MB	Matte Black	

UK & Europe



Head Office
Entrar Access Technologies UK LTD
124 City Road,
EC1V 2NX
London, United Kingdom
Call: +44 7949 265624
England and Wales - CR: 06294297

Middle East & Africa



Entrar Access Technologies
GBC 2,
Opposite to Old Airport Arrival Terminal
C Ring Rd, Doha, Qatar
Call: +974 4402 3014

Entrar Line Trading L.L.C
Smartplace Business Center
Level 2, The Iridium Building
Al Barsha, Dubai, UAE
Call: +971 5080 94464

India & Far East



Entrar Access Technologies India Pvt Ltd
No A-83, First Floor,
Road No 2, Mahipalpur Extn
New Delhi, India
Call: +91 8310330566

